

Product Catalogue



CONTENT

DEVICES AND ACCESSORIES	03
Numera® Main Devices	04
General Accessories	06
Numera® Sample Collector and Accessories	07
Printer, Labels, and Scanner	10
Immersion Tubes and Adapters	11
Aseptic Sampling Ports Assembly	12
Analyzer Accessories	14
CONSUMABLES	16
Filter Tapes	17
Sampling Sets and Reactor Connection Tubes	18
Diaphragm for Aseptic Sampling Port	25
WEAR PARTS	26
Replacement Tubing	27
Wear Parts for Sample Collector	28
SPARE PARTS	29
Spare Parts for Dilution Module	30
Spare Parts for Sample Collector and HPLC Injection Valve	31
Various Spare Parts and Tools	33
PREVENTIVE MAINTENANCE KITS	35

LEGEND

NUMERA 2 Parts available for Numera 2 only

NUMERA 3 Parts available for Numera 3 only

© 2026, Securecell AG. All rights reserved.

Numera® is a registered trademark of Securecell AG, Switzerland.

No part of this document or the products described therein may be reproduced in any form or by any means without prior written permission from Securecell AG.

The information in this catalogue reflects the state of the product at the time of publication.

Securecell AG continuously enhances its products and, therefore, reserves the right to update technical specifications, features, and procedures without prior notice.

This catalogue lists the components and parts currently available for the Numera® Autosampling System.

Please be aware that some wear and spare parts need special installation instructions and should be installed by a Securecell certified field engineer.

To order parts or book a service and preventive maintenance appointment please contact your local representative or email to orders.numera@securecell.ch.

For more information about Securecell's support and service offerings, please visit our website securecell.ch/en/support_home

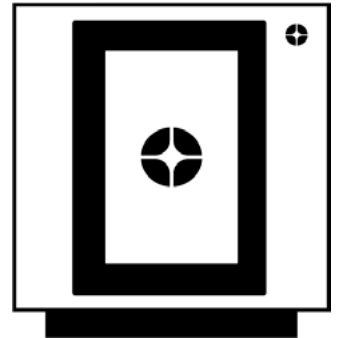
DEVICES + ACCESSORIES



CONTROL MODULE

PART NO. 006396

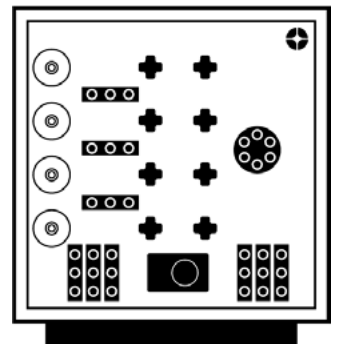
The Control Module contains the CPU with the firmware of the whole system. It offers a touch panel on the frontside for simple user interactions and status information, as well as various communication ports and a compressed air distribution on the backside.



MULTIPLEXER MODULE

PART NO. 006397

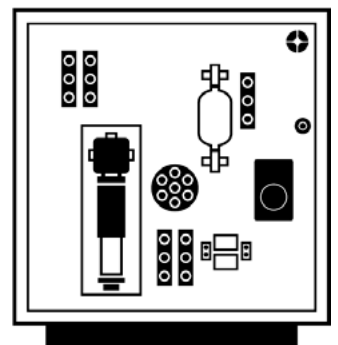
The Multiplexer Module is used to connect up to 4 bioreactors (or other sampling sources) to the Numera® System. Sterility is ensured by pinch valves.



SAMPLE DILUTION MODULE

PART NO. 006399

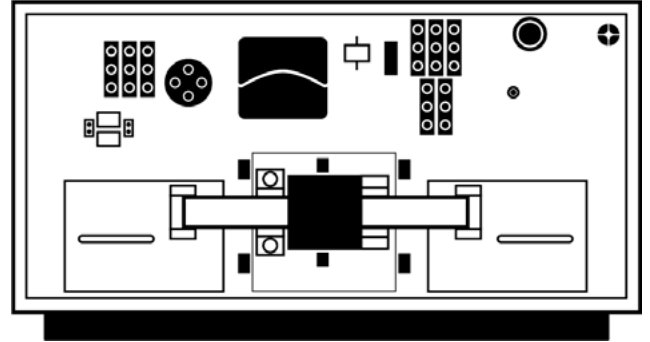
The Sample Dilution Module dilutes the samples with diluent in a range of 1:2 to 1:100.



TAPE FILTRATION MODULE

PART NO. 006400

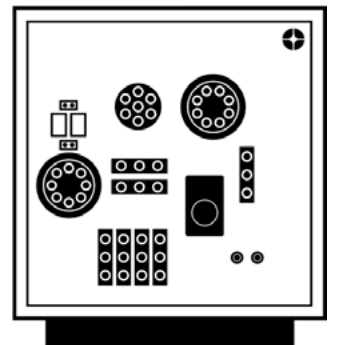
The Tape Filtration Module comes with a unique membrane-based tangential filtration technology. It enables gentle filtration of cell-loaded samples without clogging and cross-contamination. Filter tapes with various pore sizes are available (see consumables).



ROUTING MODULE

PART NO. 006398

The Routing Module offers individual sample distribution within one process and connectivity to up to 6 analytical devices, such as biochemistry analyzers and cell counters.



GENERAL ACCESSORIES

LEVEL DETECTION SENSORS

Level detection sensor, wire with open end

NUMERA 2 PART NO. 000541

Level detection sensor, wire with a plug

NUMERA 3 PART NO. 006540

Level detection sensors are available for the liquid bottles (cleaning solution and buffer) and for the waste bottle. Numera 3 offers an additional configurable level sensor (e.g., for additional rinsing, diluent, or ethanol).



GL 45 CAPS

4 port (1×1/16", 3×1/8")

PART NO. 000222

6 port (1×1/16", 5×1/8")

PART NO. 000223

7 port (1×1/16", 6×1/8")

PART NO. 000538

GL45 caps for all bottles or canisters with GL45 thread. GL45 caps seal to the bottle/canister with an O-ring behind a PTFE lip, so the O-ring therefore is not a wetted part. One port is suitable for 1/16" tubing. All other ports can fit 1/8" and 1/16" OD tubing.

The cap includes:

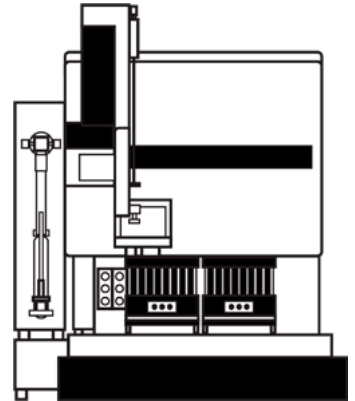
- 1 cap, GL45 thread
- 1 O-ring, EPDM
- 1 set: 1/16" nut/ferrule/color-sleeve adapter
- 3, 5, or 6 sets: 1/8" nut/ferrule/color-sleeve adapter



SAMPLE COLLECTOR ASX-7200

PART NO. 000297

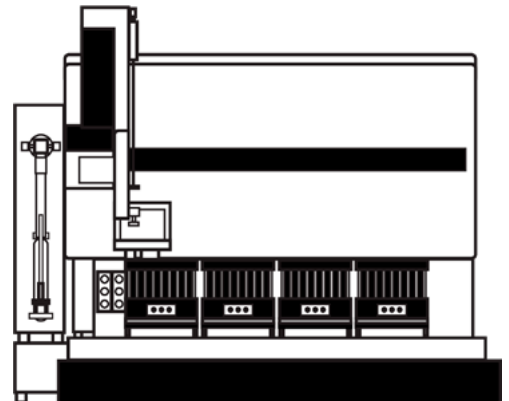
The ASX-7200 comes with 2 Peltier Rack Modules offering capacity for in total 4 Vial Racks.



SAMPLE COLLECTOR ASX-7400

PART NO. 000299

The ASX-7400 comes with 4 Peltier Rack Modules offering capacity for in total 8 Vial Racks.



VIAL RACKS

40×1.5 ml vials*

PART NO. 000304

24×4.0 ml vials*

PART NO. 000305

12×10.0 ml vials*

PART NO. 002462

The Sample Collectors can be equipped with 2 Vial Racks per Peltier Rack Module. Securecell offers Vial Racks for 1.5 ml, 4.0 ml, and 10.0 ml glass vials. Standard deep-well plates with 2, 5 or 10 ml can also be used.

*Note: Recommendations for vials and septum caps for the Well Plates are available on request.



40 x 1.5ml Vial Rack

RECOMMENDED VIALS FOR VIAL RACKS

Sample Collector Vial Racks should be equipped with sample vials and screw thread caps with pre-cut septum according to the recommendation below.

1.5 ML VIALS

1.5 ml Vials Clear

ORDER NO. 002300

ND10 Screw thread caps Septum silicone / PTFE, pre-cut

ORDER NO. 002302

Sample vials with thread ND10, \varnothing 11.6 mm, height 32 mm (made of Borosilicate glass from hydrolytic class I) and screw thread caps ND10 with borehole and pre-slit septum.



4.0 ML VIALS

4.0 ml Vials Clear

ORDER NO. 002303

ND13 Screw thread caps Natural rubber orange red / TEF transparent

ORDER NO. 002305

ND13 Screw thread caps Septum silicone / PTFE

ON-DEMAND

Sample vials with thread ND13, \varnothing 14.7 mm, height 45 mm (made of Borosilicate glass from hydrolytic class I) and screw thread caps ND13 with borehole.



10.0 ML VIALS

10.0 ml Vials Clear

ORDER NO. 002306

ND18 Screw thread caps Natural rubber orange red / TEF transparent

ORDER NO. 002308

ND18 Screw thread caps Septum silicone / PTFE

ON-DEMAND

Sample vials with thread ND18, \varnothing 22.5 mm, height 46 mm (made of Borosilicate glass from hydrolytic class I) and screw thread caps ND18 with borehole.



HPLC / UHPLC INJECTION VALVES

INJECTION VALVE ASSEMBLY KITS

HPLC 5.000 psi including Vertical Injector Port and 20 μ l Loop*

PART NO. 000303

UHPLC 20.000 psi including Vertical Injector Port and 20 μ l Loop*

PART NO. 000430

The Sample Collector can be equipped with one or two of the listed HPLC/UHPLC Injection Valves, including a Vertical Port Injector and a Sample Loop (ID 0.14 mm).

*Note: Sample Loops are listed in the Spare Parts section.
Replacement seals for HPLC Injection Valves are listed in the Wear Part section.



PRINTER, LABELS, AND SCANNER

Label Printer Godex RT863i

PART NO. 002795

Labels for 1.5 ml vials (34 × 10 mm, PP, white, 5 × 5000 pcs./roll)

PART NO. 000564

Barcode scanner Honeywell 1950 h

PART NO. 000566

A label printer can be useful to print labels for the vials directly out of the Lucullus® sample list. Labels can contain sample names, sample ID and Barcodes. The white labels have a dimension, that fits to standard 1.5 ml HPLC vials and are resistant to water, common solvents and can also be frozen at -20°C.

The barcode scanner is useful to read sample information from the barcode labels. If manually drawn samples are added for automated sample preparation and/ or measurements with Numera, the barcode can be used to enter sample ID's in Lucullus® before placing the samples on the Autosampler. The scanner comes with an USB cable and can be used with any Lucullus® computer.



IMMERSION TUBES AND ADAPTERS

[C] IMMERSION TUBE

ID 0.75 mm 30 cm (with Luer-Lock, female)	PART NO. 000307
ID 0.75 mm 50 cm (with Luer-Lock, female)	PART NO. 000575
ID 1.50 mm 30 cm (with Luer-Lock, female)	PART NO. 000607
ID 1.50 mm 50 cm (with Luer-Lock, female)	PART NO. 000608

Stainless steel immersion tubes are used in combination with a suitable reactor adapter to sample from bench top (glass) bioreactors. They are available with two different inner diameters and in two different lengths. For cell culture and microbial processes we recommend the inner diameter 1.5 mm. The same inner diameter must be chosen for reactor connection tubes (see consumables). An alternative choice is the 0.75 mm inner diameter immersion tube, which can minimize sample volume consumption in specific scenarios. Replacement recommended after 3 sterilization cycles.



REACTOR ADAPTERS

10 mm Applikon	PART NO. 001680
10 mm	PART NO. 000553
11 mm	PART NO. 000559
12 mm	PART NO. 001852
PG 13.5	PART NO. 001675

The immersion tubes are installed with a suitable adapter. Choose the right adapter for your bench top (glass) bioreactor. Check the specifications of the head plate of your reactor manufacturer.

From left to right: 10 mm adapter (Applikon), 10+11 mm adapter, 12 mm adapter, PG 13.5 adapter



ASEPTIC SAMPLING PORTS ASSEMBLY

The Aseptic Sampling Port enables sampling from stainless steel bioreactors using the 25 mm side port. It is available in two typical dimensions for B. Braun safety ports and for standard Ingold ports.

DIMENSIONS B. BRAUN SAFETY PORT

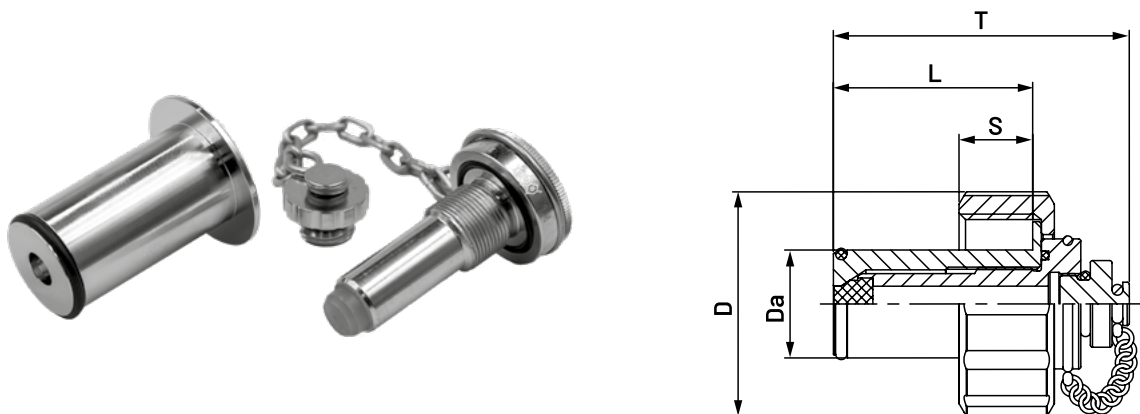
Size	D [mm]	Da (e8) [mm]	T [mm]	L [mm]	S [mm]
DN25	52.00	25.00	68.00	46.00	17.00

DIMENSIONS STANDARD 25 MM SIDE PORT (INGOLD)

Size	D [mm]	Da (e8) [mm]	T [mm]	L [mm]	S [mm]
DN25	52.00	25.00	52.00	30.00	17.00

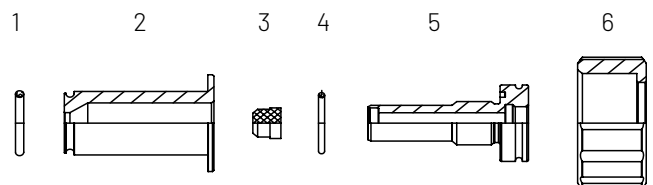
SPECIFICATIONS

Material (medium contact)	Stainless steel 1.4435 BN2 (316L)
Material (medium separated)	1.4305 or equivalent
Diaphragm material	Silicone
Seals	O-Ring, EPDM
Surface quality	Medium contacted surface < Ra 0.76 µm
Operating temperature	-20 to +80 °C
Operating pressure	-1 to +16 bar (depending on temperature)
Certifications	FDA specified for all sealing materials USP Class VI



Aseptic sampling socket

- 1 O-Ring
- 2 Sampling Port Insert
- 3 Diaphragm - can be ordered as spare part - see p. 24
- 4 O-Ring
- 5 Union Nut
- 6 Sampling Socket



SEPTUM PIERCING NEEDLE FOR ASEPTIC SAMPLING PORT

ASEPTIC SAMPLING PORTS ASSEMBLY INCLUDING SEPTUM PIERCING NEEDLES

Aseptic Port Ingold, Length = 30 mm incl. Septum Piercing Needle and holder

PART NO. 002062

Aseptic Port B. Braun, Length = 46 mm incl. Septum Piercing Needle and holder

PART NO. 001644

The connection to the Numera® system is made using a septum piercing needle with a side entry. The needle comes with a holder that attaches to the Aseptic Sampling Port, as well as a Luer-Lock connector for connecting the Reactor Connection Tube.

*Note: Replacement diaphragms are listed in the Spare Parts section.



Septum Piercing Needle Assembly (with Luer Lock connector and Reactor Connection Tubing)



Septum Piercing Needle Assembly (disassembled)



Aseptic Sampling Port Assembly including Septum Piercing Needle

ANALYZER ACCESSORIES

Numera can be combined with a range of analyzers to enable online analytics. Some analyzers require a sample transfer module. Please contact your sales representative to select the right option and to verify whether a specific analyzer integration is supported.

SAMPLE TRANSFER UNIT STU TYPE 1

NUMERA 3 PART NO. 006683

Sample transfer interface unit for cell counters (additional info upon request). Tubing included.



SAMPLE TRANSFER UNIT STU TYPE 2

NUMERA 3 PART NO. 006707

Sample transfer interface unit for Cedex® BioHT analyzer (Roche Custom Biotech). Tubing included.



SAMPLE TRANSFER UNIT

NUMERA 2 PART NO. 001559

Sample transfer for Cedex® HiRes (Roche Custom Biotech) or Vi-CELL XR (Beckmann Coulter).
Tubing included.

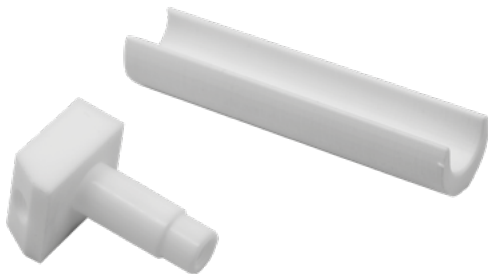


CEDEX BIO HT® CUVETTE INSTALLATION KIT

PART NO. 003026

(Items 002980 and 001961 combined)

PTFE cuvette for sample transfer to Cedex® BioHT Analyzer (Roche Custom Biotech). Tubing included.



PTFE Cuvette



1-port serial device server

CONSUMABLES



FILTER TAPES

FILTER COILS

Filter tape 0.22 µm PES Membrane* on coil	NUMERA 2	PART NO. 000270
Filter tape 0.45 µm PES Membrane* on coil	NUMERA 2	PART NO. 000269
Filter tape with 1.20 µm PES Membrane* on coil	NUMERA 2	PART NO. 001986
Filter coil without filter tape	NUMERA 2	PART NO. 000610
Filter tape 0.22 µm PES Membrane* on coil	NUMERA 3	PART NO. 006688
Filter tape 0.45 µm PES Membrane* on coil	NUMERA 3	PART NO. 006689
Filter tape with 1.20 µm PES Membrane* on coil	NUMERA 3	PART NO. 006690
Filter coil without filter tape	NUMERA 3	PART NO. 006691

Filter Tape is available on coils containing 30 m (~100 ft).

*Note: PES (Polyethersulfone) is a hydrophobic membrane, designed to remove particulates during filtration, and its low protein and drug binding characteristics make it ideally suited for life science applications.

Ensure the Filter Tape label faces up when loading the coil into the TFU Filter Tape Drawer



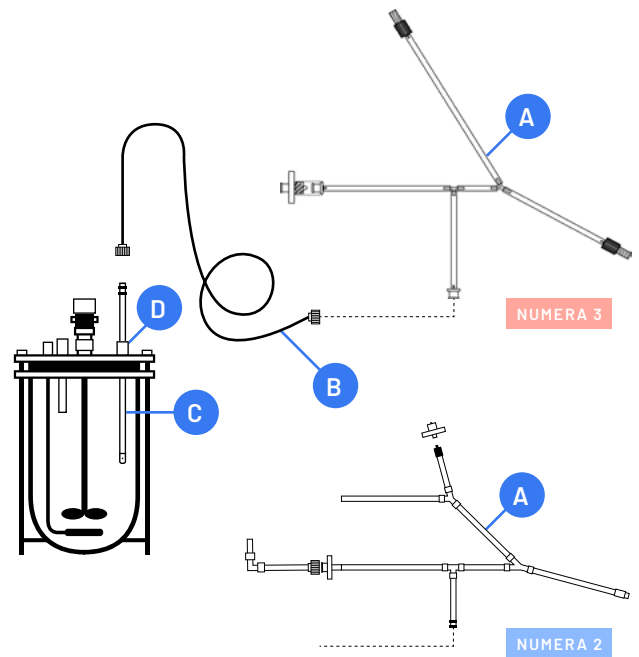
SAMPLING SETS AND REACTOR CONNECTION TUBES

SETUP EXAMPLES

For Benchtop Bioreactors with stainless steel immersion tubes

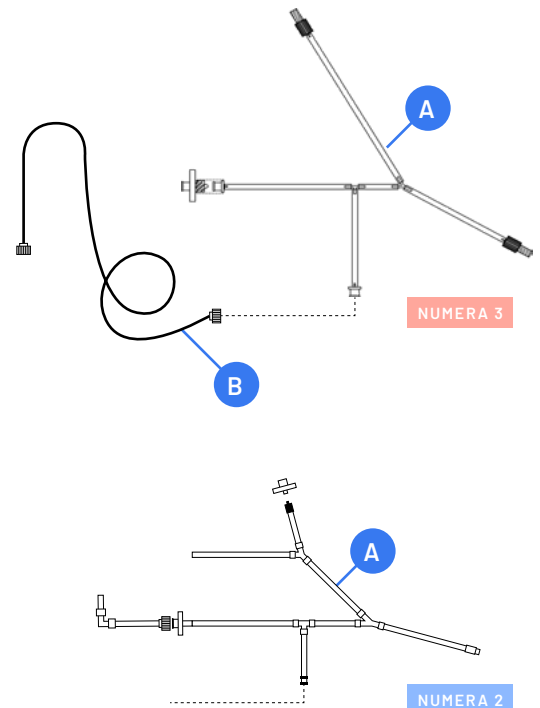
- A** Sampling Set for Multiplexer Modules
→ see page 19-20, section [A]
- B** Tube for reactor connection (available with ID 0.75 mm or 1.5 mm and lengths of 1-10 m)
→ see pages 21-24, section [B]
- C** Stainless Steel Immersion Tube with Immersion Tube Connection (available with ID 0.75 mm or 1.5 mm and length 300 or 500 mm)
→ see page 11, section [C]
- D** Reactor Adapter (various types available),
→ see page 11

For sterile connection of bioreactors, using the stainless steel immersion tubes for benchtop bioreactors, for single-use bioreactors using the existing Luer-Lock connection, for stainless steel bioreactors equipped with the Aseptic Sampling Port, various combinations of autoclavable sampling sets and reactor connection tubes are available.



For Single-Use Bioreactors (SUB), Ambr® Modular Systems and for stainless steel bioreactors (with the Aseptic Sampling Port)

- A** Sampling Set for Multiplexer Modules
→ see page 19-20, section [A]
- B** Tube for reactor connection (available with ID 0.75 mm or 1.5 mm and length 1-10 m)
→ see page 21-24, section [B]



Example of a Single-Use Bioreactor with a Luer-Lock connection

Ambr® is a registered trademark of
"The Automation Partnership (Cambridge) Limited"

SAMPLING SETS AND REACTOR CONNECTION TUBES

[A] SAMPLING SET for Multiplexer Modules V2.1

NUMERA 2 PART NO. 002031

The set contains 4 sampling sets for channel 1 to 4 of the Multiplexer Module V2.1. Replacement recommended after 3 sterilizations.

The set does not include the Ethanol lines and adapters - those can be ordered separately. The lines and adapters can be sterilized several times and therefore do not need to be replaced regularly.

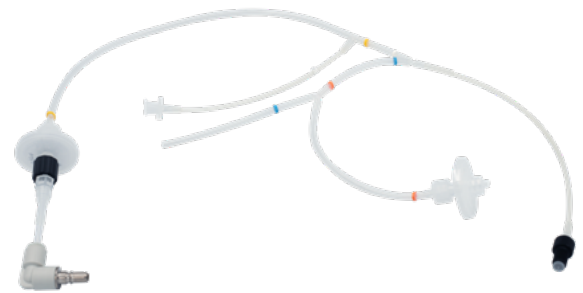


[A] PH SENSITIVE SAMPLING SET for Multiplexer Modules V2.1

NUMERA 2 PART NO. 002670

The set contains 4 sampling sets for channel 1 to 4 of the Multiplexer Module V2.1. Replacement recommended after 3 sterilizations.

The set does not include the Ethanol lines and adapters - those can be ordered separately. The lines and adapters can be sterilized several times and therefore do not need to be replaced regularly.



TUBING FOR ETHANOL LINES 2 m

NUMERA 2 PART NO. 002618

ID 0.75 FEP tubings with UNF Cheminert Nut, white, including a PEEK tube adapter.
Set of 4



[A] SAMPLING SET for Multiplexer Modules

NUMERA 3 PART NO. 006711

The set contains 4 identical sampling sets for the channels of the Multiplexer Module.

Replacement recommended after 3 sterilizations.



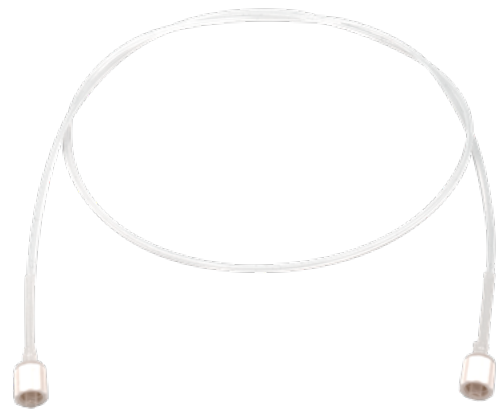
SAMPLING SETS AND REACTOR CONNECTION TUBES

[B] TUBES FOR REACTOR CONNECTION ID 0.75 mm (with double Luer-Lock, male)

1 m	PART NO. 002011
2 m	PART NO. 002012
3 m	PART NO. 002013
4 m	PART NO. 002014
5 m	PART NO. 002015
6 m	PART NO. 002016
7 m	PART NO. 002017
8 m	PART NO. 002018
9 m	PART NO. 002019
10 m	PART NO. 002020

The Reactor Connection Tubes with an inner diameter of 0.75 mm are available in lengths from 1 to 10 m. Replacement recommended after 3 sterilizations.

* Note Color code for Luer-Lock connections:
white = ID 0.75 mm
black = ID 1.50 mm



SAMPLING SETS AND REACTOR CONNECTION TUBES

[B] TUBES FOR REACTOR CONNECTION ID 1.50 mm (with double Luer-Lock, male)

1 m	PART NO. 002021
2 m	PART NO. 002022
3 m	PART NO. 002023
4 m	PART NO. 002024
5 m	PART NO. 002025
6 m	PART NO. 002026
7 m	PART NO. 002027
8 m	PART NO. 002028
9 m	PART NO. 002029
10 m	PART NO. 002030

The Reactor Connection Tubes with an inner diameter of 1.50 mm are available in lengths from 1 to 10 m. Replacement recommended after 3 sterilizations.

* Note Color code for Luer-Lock connections:
white = ID 0.75 mm
black = ID 1.50 mm



SAMPLING SETS AND REACTOR CONNECTION TUBES

[B] TUBES FOR REACTOR CONNECTION PH SENSITIVE ID 0.75 MM (with double Luer-Lock, male)

1 m	PART NO. 003716
2 m	PART NO. 003717
3 m	PART NO. 003718
4 m	PART NO. 002970
5 m	PART NO. 003719
6 m	PART NO. 003720
7 m	PART NO. 003721
8 m	PART NO. 003722
9 m	PART NO. 002958
10 m	PART NO. 003723

The pH Sensitive Reactor Connection Tubes with an inner diameter of 0.75 mm are available in lengths from 1 to 10 m. Replacement recommended after 3 sterilizations.

* Note: Color code for Luer-Lock connections is green



SAMPLING SETS AND REACTOR CONNECTION TUBES

[B] Tubes for Reactor Connection PH SENSITIVE ID 1.50 mm (with double Luer-Lock, male)

1 m	PART NO. 003724
2 m	PART NO. 003725
3 m	PART NO. 003726
4 m	PART NO. 002994
5 m	PART NO. 003727
6 m	PART NO. 003728
7 m	PART NO. 003729
8 m	PART NO. 003730
9 m	PART NO. 002993
10 m	PART NO. 003731

The pH sensitive Reactor Connection Tubes with an inner diameter of 1.50 mm are available in lengths from 1 to 10 m. Replacement recommended after 3 sterilizations.

* Note: Color code for Luer-Lock connections is green



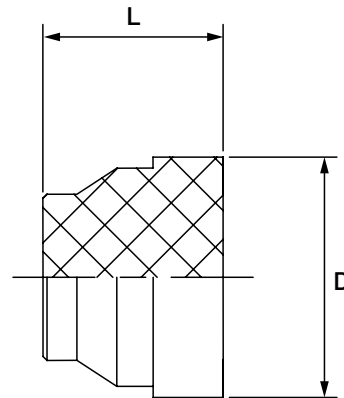
Diaphragm for Aseptic Sampling Port (1 pc.)

PART NO. 002312

For the Aseptic Sampling Port, a silicone Replacement Diaphragm is available. Replacement recommended after each process.

Dimensions

Size	D [mm]	L [mm]
DN25	12.00	8.50



WEAR PARTS



REPLACEMENT TUBING

FEP tubing is recommended to exchange twice a year. The peristaltic pump tubing should be replaced more often depending on the frequency of use. We highly recommend biannual preventive maintenance. Please contact your local representative for more information.

REPLACEMENT TUBING SETS FOR MODULES

Tubing Set Multiplexer Module V2.1	NUMERA 2	PART NO. 001710
Tubing Set Dilution Module V2.4	NUMERA 2	PART NO. 001711
Tubing Set Routing Module V2.1	NUMERA 2	PART NO. 001712
Tubing Set Filtration Module V2.0, including 4 mL Loop Extension [003206]	NUMERA 2	PART NO. 001713
Tubing Set Multiplexer Module V3	NUMERA 3	PART NO. 006618
Tubing Set Dilution Module V3	NUMERA 3	PART NO. 006619
Tubing Set Routing Module V3	NUMERA 3	PART NO. 006620
Tubing Set Filtration Module V3, including 4 mL Loop Extension [003206]	NUMERA 3	PART NO. 006621
Tubing Set Sample Collector ASX-7200		PART NO. 001714
Tubing Set Sample Collector ASX-7400		PART NO. 001715

Tubing Sets containing all FEP tubing within the module incl. waste and CIP lines and peristaltic pump tubing.

REPLACEMENT PERISTALTIC PUMP TUBING

Peristaltic Pump Tubing for Multiplexer, Dilution or Routing Module (one piece)	NUMERA 2	PART NO. 001950
Peristaltic Pump Tubing for Tape Filtration Module (one piece)	NUMERA 2	PART NO. 001949
Peristaltic Pump Tubing for Multiplexer, Dilution or Routing Module (one piece)	NUMERA 3	PART NO. 006684
Peristaltic Pump Tubing for Tape Filtration Module (one piece)	NUMERA 3	PART NO. 006687

Tubing for peristaltic pumps, including the connection pieces can be ordered for replacement separately.

WEAR PARTS FOR SAMPLE COLLECTOR

TYGON RINSE/DRAIN HOOKUP KIT

PART NO. 001977

Includes all tubing for the rinse station of the Sample Collector, recommended to replace every six months.



RINSE STATION

PART NO. 001953

Complete Rinse station, without tubes, recommended to replace every six months.



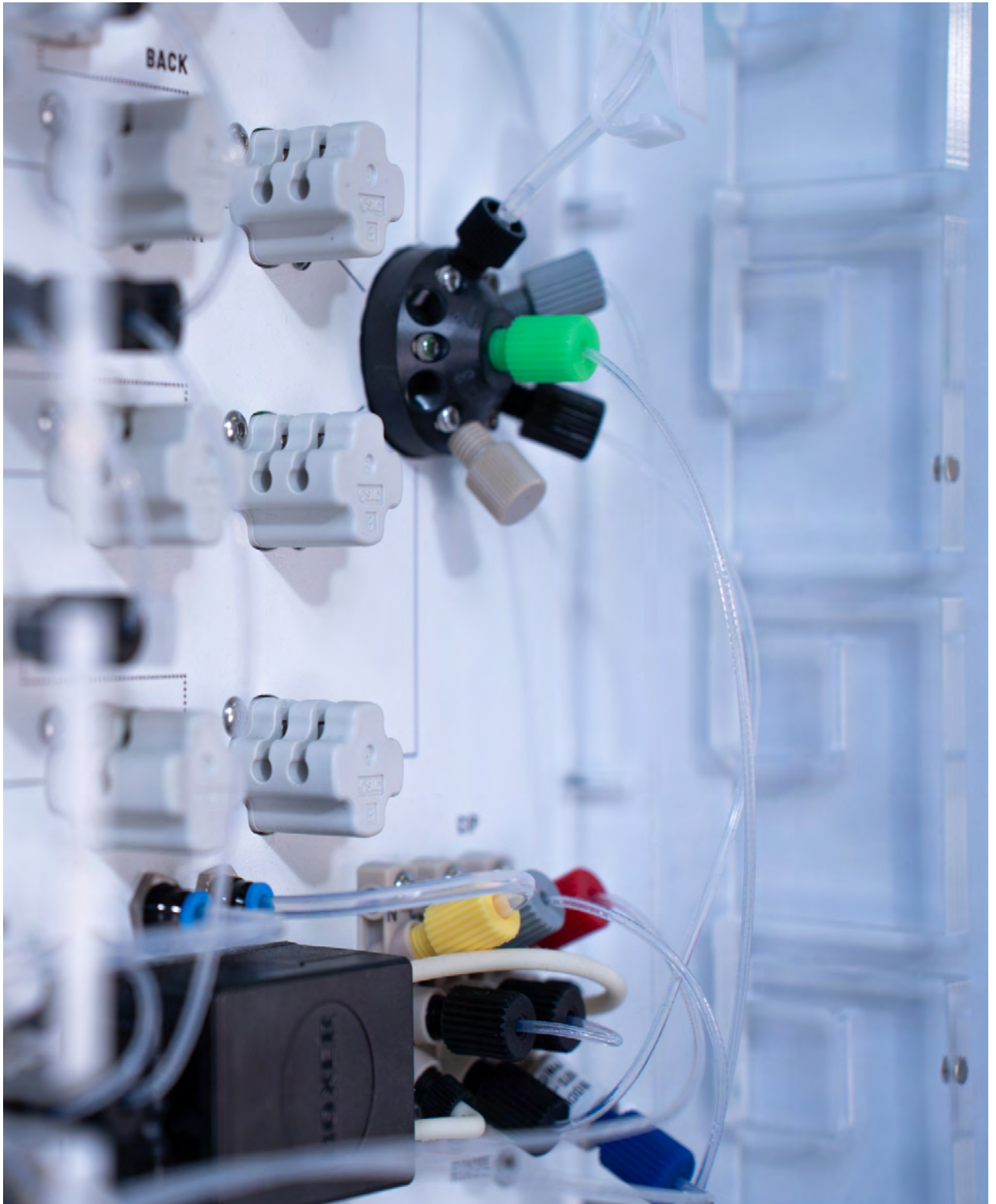
2-CHANNEL PERISTALTIC PUMP TUBING

PART NO. 001951

Spare tube for Sample Collector peristaltic pump (back side), equivalent to PharMed®, recommended to replace every six months.



SPARE PARTS



SPARE PARTS FOR DILUTION MODULE

SYRINGE FOR DILUTION MODULE V2.4

NUMERA 2 PART NO. 000130

PSD/4 Syringe, PE, 30mm, 5ml



SYRINGE FOR DILUTION MODULE V3

NUMERA 3 PART NO. 109727

PSD/4 Bubble Free Prime Syringe, PE, 30mm, 5ml



SYRINGE VALVE FOR DILUTION MODULE V2.4

NUMERA 2 PART NO. 000131

PSD/4 3-Port Distribution Flow Path (3-5), Ceramic, HVC, Luer Lock
Compatible with Syringe [000130]



SYRINGE VALVE FOR DILUTION MODULE V3

NUMERA 3 PART NO. 109728

3-Port Distribution Flow Path (3-5), Ceramic, HVC, Luer Lock
Compatible with Syringe [109727]



MIXING CHAMBER FOR DILUTION MODULE

PART NO. 000476

Glass mixing chamber with UNF 1/4-28 connectors



SPARE PARTS FOR SAMPLE COLLECTOR AND HPLC INJECTION VALVE

SAMPLE COLLECTOR PROBE

PART NO. 001948

with ventilation and BEV-Tip, 6" for Sample Collector ASX



PELTIER RACK MODULE

PART NO. 001954

for mounting sample racks and well plates
Temperature Range (at 25°C ambient temperature): 4°C to 40°C



SYRINGE FOR ASX SYRINGE PUMP

PART NO. 001970

500µL for Syringe Pump Module SPM-700+



2-WAY VALVE FOR ASX SYRINGE PUMP

NUMERA 2 PART NO. 001975

3-Port Valve for Module SPM-700+



3-WAY VALVE FOR ASX SYRINGE PUMP

NUMERA 3 PART NO. 000131

4-Port Valve for Module SPM-700+

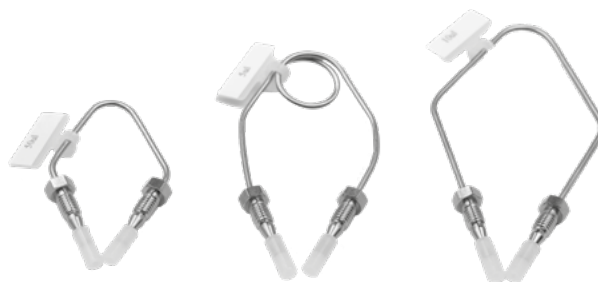


SPARE PARTS FOR SAMPLE COLLECTOR AND HPLC INJECTION VALVE

SAMPLE LOOPS FOR HPLC INJECTION VALVE

5 µl	PART NO. 000249
10 µl	PART NO. 002309
20 µl	PART NO. 000504
50 µl	PART NO. 000505

Sample loops for injection valve on Sample Collector. Loops (ID 0.14 mm) are electrolytically cut and electrochemically polished and include two stainless steel nuts and ferrules. Loops with other Volumes (from 2 to 500 µl) are available on request.



VERTICAL SAMPLE INJECTION PORT FOR HPLC

PART NO. 006163

ID1.5mm PEEK Vertical Sample Injection Port, recommended to be replaced in every six months.

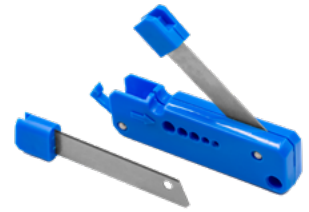


VARIOUS SPARE PARTS AND TOOLS

TUBE CUTTER

PART NO. 000220

Clean-Cut Polymer Tubing Cutter



SETTING TOOL

PART NO. 000296

Stainless steel, for flangeless nuts and ferrules



RELEASE TOOL

PART NO. 002978

for disconnecting FESTO air tube fittings

For tubing O.D. 4 mm
For tubing O.D. 6 mm
For tubing O.D. 8 mm
For tubing O.D. 10 mm



FLANGELESS NUTS AND COLLAPSIBLE FERRULES

Flangeless 1/4-28 tube end fittings for 1/16" and 1/8" FEP tubes are available in various colors on request.



CHECK VALVE

PART NO. 000114

In-line UNF 1/4-28 check valve, PEEK housing, EPDM check elements, 100 psi.



VARIOUS SPARE PARTS AND TOOLS

FEP TUBING

FEP Tubing with 1/16" OD (0.030", 0.75 mm) and 1/8" OD (0.060", 1.50 mm) is available in customs length on request.



LOW PRESSURE VALVES

NUMERA 2

ON REQUEST

Two position, and stream selector valves with integrated motor.

Max press: 250 psi liq
Valve head: PPS
Rotor: Valcon E2
Stator: PPS



ROTARY VALVES

NUMERA 3

ON REQUEST

Two position, eight position, and multiport rotary valves with integrated motor.

Max press: 145 psi liq
Valve head: PEEK
Rotor: UPE
Stator: ETFE | PEEK



PERISTALTIC PUMP

NUMERA 3

PART NO. 005873

2900 Series Back Mount, stepper motor, no sensor.



PREVENTIVE MAINTENANCE KITS

MULTIPLEXER MODULE PM KIT

NUMERA 2 PART NO. 001841

Includes all parts that are exchanged at MUX within PM.



DILUTION MODULE PM KIT

NUMERA 2 PART NO. 001842

Includes all parts that are exchanged at SDU within PM.



FILTRATION MODULE PM KIT

NUMERA 2 PART NO. 001843

Includes all parts that are exchanged at TFU within PM.



ROUTING MODULE PM KIT

NUMERA 2 PART NO. 001844

Includes all parts that are exchanged at SRU within PM.

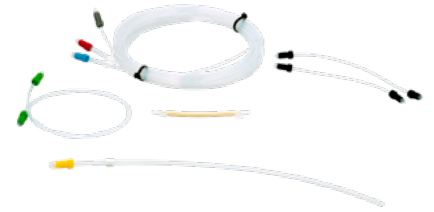


PREVENTIVE MAINTENANCE KITS

MULTIPLEXER MODULE PM KIT

NUMERA 3 PART NO. 006666

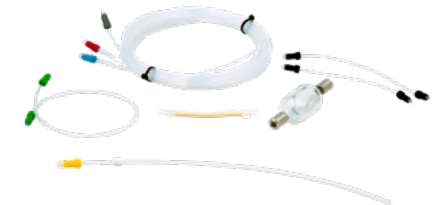
Includes all parts that are exchanged at MUX within PM.



DILUTION MODULE PM KIT

NUMERA 3 PART NO. 006667

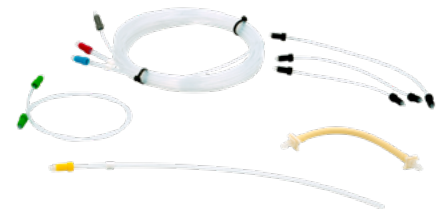
Includes all parts that are exchanged at SDU within PM.



FILTRATION MODULE PM KIT

NUMERA 3 PART NO. 006668

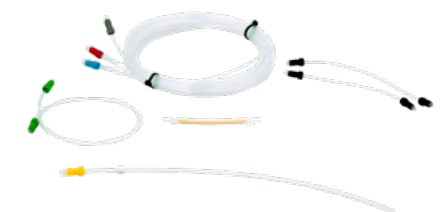
Includes all parts that are exchanged at TFU within PM.



ROUTING MODULE PM KIT

NUMERA 3 PART NO. 006669

Includes all parts that are exchanged at SRU within PM.



PREVENTIVE MAINTENANCE KITS

SAMPLE COLLECTOR-7200 PM KIT

PART NO. 001845

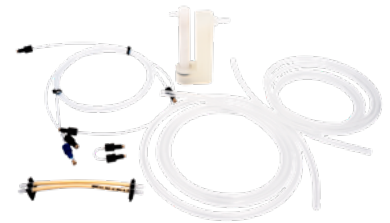
Includes all parts that are exchanged at ASX within Preventive Maintenance. Contains tubings and Rinse Station 422 BORE A7K [001953]



SAMPLE COLLECTOR-7400 PM KIT

PART NO. 002298

Includes all parts that are exchanged at ASX within Preventive Maintenance. Contains tubings and Rinse Station 422 BORE A7K [001953]



SAMPLE COLLECTOR INJECTION PM KIT

PART NO. 002830

Includes all parts that are exchanged at ASX Sample Injection Valve within Preventive Maintenance.

PREVENTIVE MAINTENANCE KITS

FLEX2 FLUIDIC CONNECTION KIT/PM KIT

PART NO. 002841

Includes all parts of the fluidic connection between Numera® SRU and the inlet and outlet ports of the Bioprofile® FLEX 2 analyzer (Nova Biomedical).

BIOHT FLUIDIC CONNECTION KIT/PM KIT

PART NO. 002842

Includes all parts of the fluidic connection between Numera® SRU and the cuvette assembly of the Cedex® Bio HT analyzer (Roche Custom Biotech).

SAMPLE TRANSFER UNIT CONNECTION KIT/PM KIT

NUMERA 2

PART NO. 002946

Includes all parts that are exchanged at STU within PM

STU TYPE 1 CONNECTION KIT/PM KIT

NUMERA 3

PART NO. 006664

Includes all parts that are exchanged at STU within PM

STU TYPE 2 CONNECTION KIT/PM KIT

NUMERA 3

PART NO. 006665

Includes all parts that are exchanged at STU within PM

AGILENT ASX FLUIDIC CONNECTION KIT/PM KIT

PART NO. 006404

Connects the Sample Collector's injection valve directly to the HPLC. No sample loop is needed. The Sample Collector injects the sample and sends it to the HPLC valve.

AGILENT SRU FLUIDIC CONNECTION KIT/PM KIT

PART NO. 006405

Connects the pump of the Sample Routing Module directly to the HPLC. Sample Collector not needed or bypassed.

PREVENTIVE MAINTENANCE KITS

10 MM REACTOR ADAPTER O-RING PM KIT

PART NO. 003042

O-ring set for 4 reactor channels (4 pieces) for replacement during maintenance of the reactor adapter

11 MM REACTOR ADAPTER O-RING PM KIT

PART NO. 003043

O-ring set (4 pieces) for replacement during maintenance of the reactor adapter

12 MM REACTOR ADAPTER O-RING PM KIT

PART NO. 003044

O-ring set (4 pieces) for replacement during maintenance of the reactor adapter

13.5 MM REACTOR ADAPTER O-RING PM KIT

PART NO. 003045

O-ring set (4 pieces) for replacement during maintenance of the reactor adapter



SECURECELL AG

In der Luberzen 29, CH-8902 Urdorf

Phone +41 44 732 91 00

contact@securecell.ch

securecell.ch